

Joining two words

Often used when using two words to describe something.

'And' connects the two words.

The crossing was black and white.



Capital letter at the

Full stop ends the sentence

Joining two clauses together

Here are two clauses of equal value (they make sense by themselves):

We saw a brown dog.
It chased a black cat.

We can connect both ideas to form one sentence.

'and' connects the two clauses.

We saw a brown dog and it chased a black cat.



Capital letter at the start

Full stop ends the sentence

Questions

A question mark is used when the sentence forms a question:



Exclamation

Sentences that show strong feeling:



Fearful



Excited

What you should know be able to do by the end of year 1

- How to combine words to make sentences.
- Joining words and clauses using and.
- Be able to use sentences to form short narratives.
- Separate words with spaces .
- Learn to use capital letters, full stops, question marks and exclamation marks to separate sentences .
- Use capital letters for names.

Vocabulary

Letter	A letter is one of the characters that make up the alphabet.
Capital letter	Upper case letter used at the start of a sentence or for names of people and places
Word	A unit of language that speakers can identify
Sentence	A group of words that communicate a complete thought
Punctuation	Markings that clarify sentences
Full stop	Punctuation mark (.) normally placed at the end of a statement (sentence that tells you something).
Question mark	Punctuation mark (?) placed at the end of a sentence to indicate a question
Exclamation mark	A punctuation mark (!) used after an exclamation
Pronoun	Word that is used in place of a noun or noun phrase (she, he, his, hers, ours)
Verbs	A verb can show actions like movement or thinking.
Coordinating conjunction	Word that serves to connects words or phrases or clauses or sentences that would also make sense on their own
Clause	A clause is a group of words with a subject and verb.
Subject	Who or what the clause is about e.g. who performs the action.

Capital letters

Start of a sentence starts with a capital letter and names of people and places:

Names of people: Daniel, Rebecca.
Names of places: England, Bury St Edmunds.

Question 1: A capital letter should be used (tick all that apply)	Start of unit:	End of unit:
For names of people		
At the start of a new line		
At the start of a sentence		
For every word		

Question 5: A verb is used to...	Start of unit:	End of unit:
Show the name of things		
Show actions		
Connect two sentences		
Who or what the sentence is about.		

Question 8: A statement sentences normally ends with...	Start of unit:	End of unit:
An exclamation.		
A full stop		
A question		
All of the above		

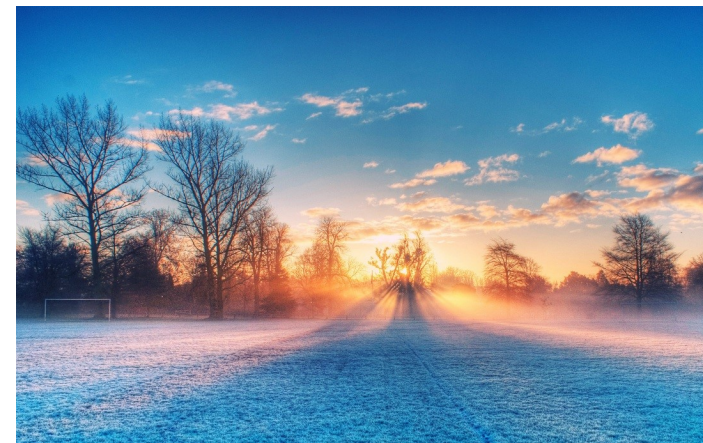
Question 2: A sentence is...	Start of unit:	End of unit:
A group of words		
A complete thought		
Something that ends in a full stop		
More than two words		

Question 6: Subject is used to show...	Start of unit:	End of unit:
Show the name of things		
Show actions		
Connect two sentences		
Who or what the sentence is about.		

Question 9: 'And' is an example of...	Start of unit:	End of unit:
A verb		
A noun		
A conjunction		
An adjective		

Question 3: What piece of punctuation should follow this sentence: Are you going to school_	Start of unit:	End of unit:
Full stop .		
Exclamation !		
Question mark ?		
None		

Question 7: Rewrite the sentences correctly	Start of unit:	End of unit:
we went to the beach?		
Are you feeling well!		
i like ice cream and cake		



Question 4: What type of punctuation should follow this sentence: Get off my foot_	Start of unit:	End of unit:
Question mark ?		
Full stop .		
None		
Exclamation !		

10. Write a sentence to describe the image.

	Start of unit
	End of unit